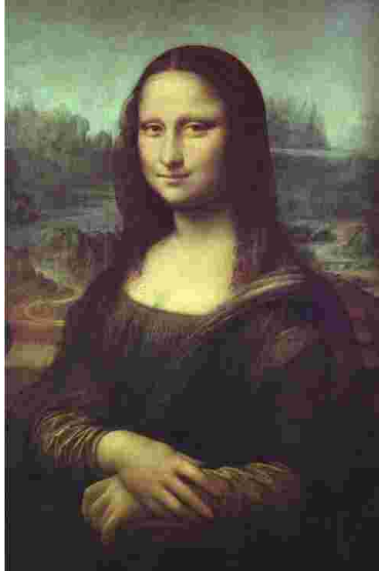


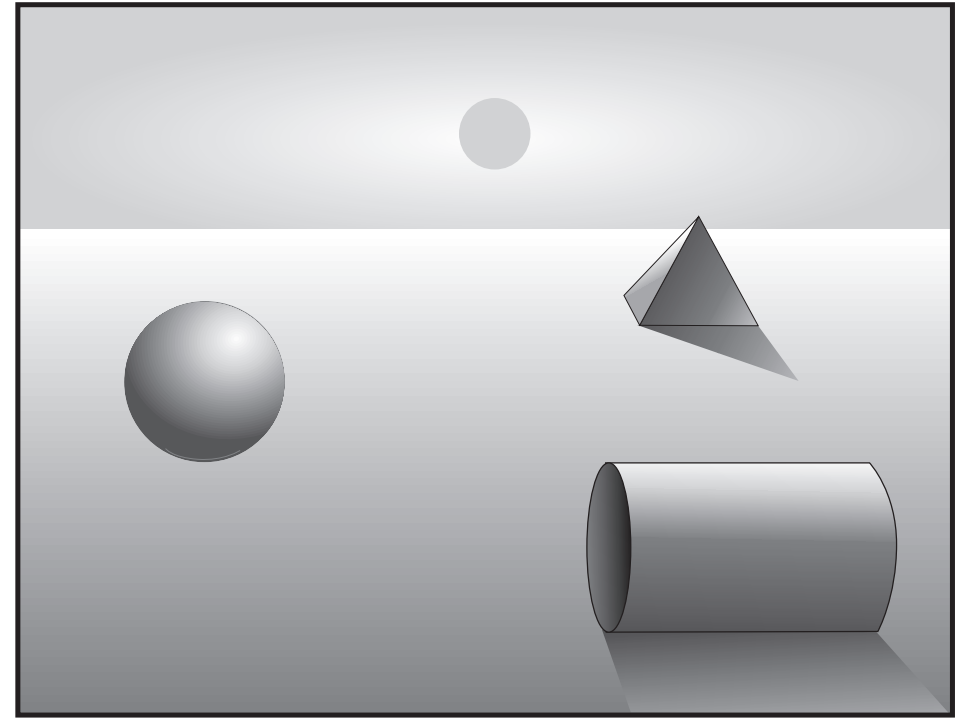
NAME:

SCIENCE & ART II: *CHIAROSCURO* / SPACE

Mona Lisa, Leonardo da Vinci,
1503-1506, oil on wood, Paris



Drawings / Studies
Leonardo da Vinci

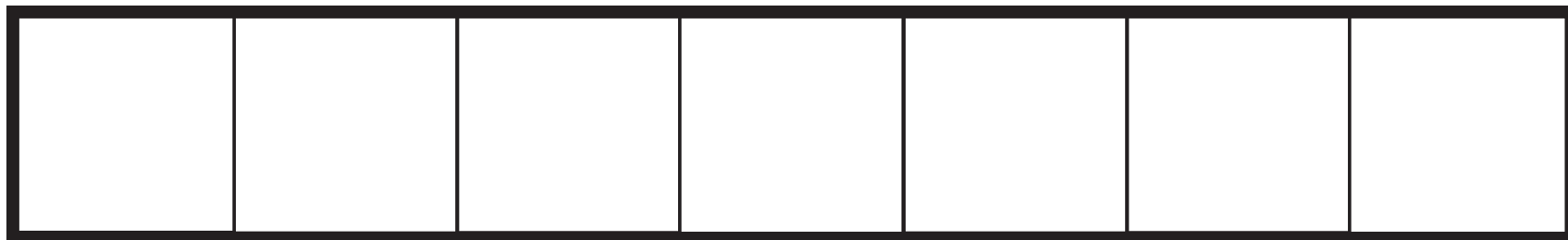


David with the Head of Goliath, Caravaggio 1601, oil on wood

What are the **basic characteristics** of a Renaissance painting / drawing that uses *chiaroscuro*?

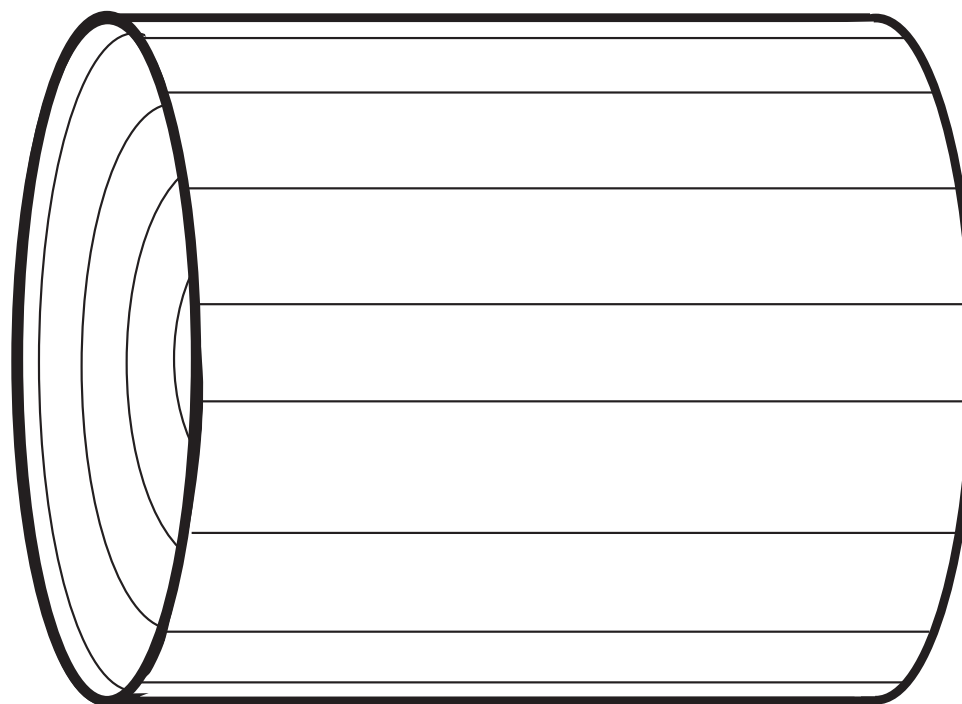
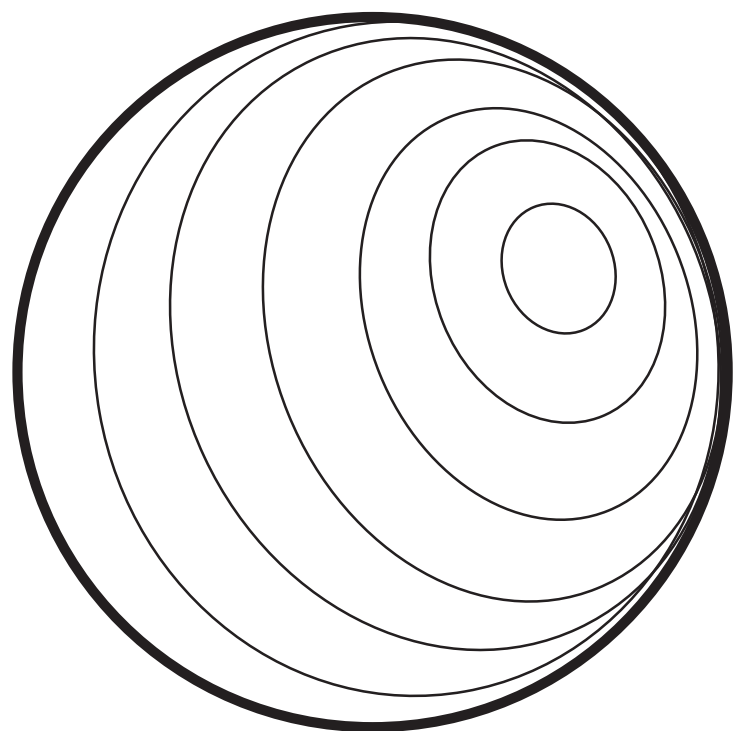
- 1.
- 2.
- 3.
- 4.
- 5.

ASSIGNMENT: On the sheet provided, practice shading techniques using pencil, paint or charcoal. On the second part, using the shape sheet, add elements to the landscape sheet. Turn the shapes into forms.

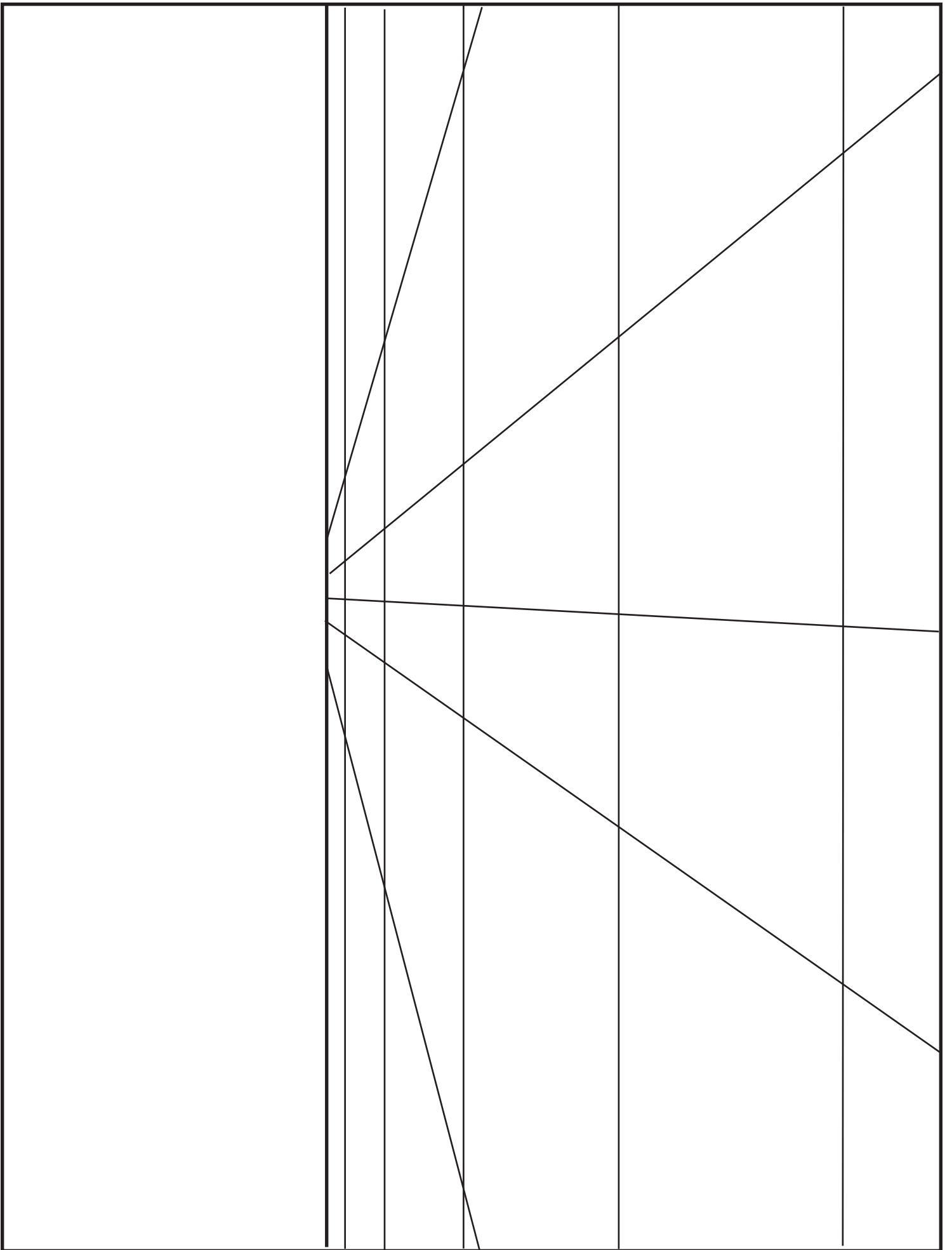


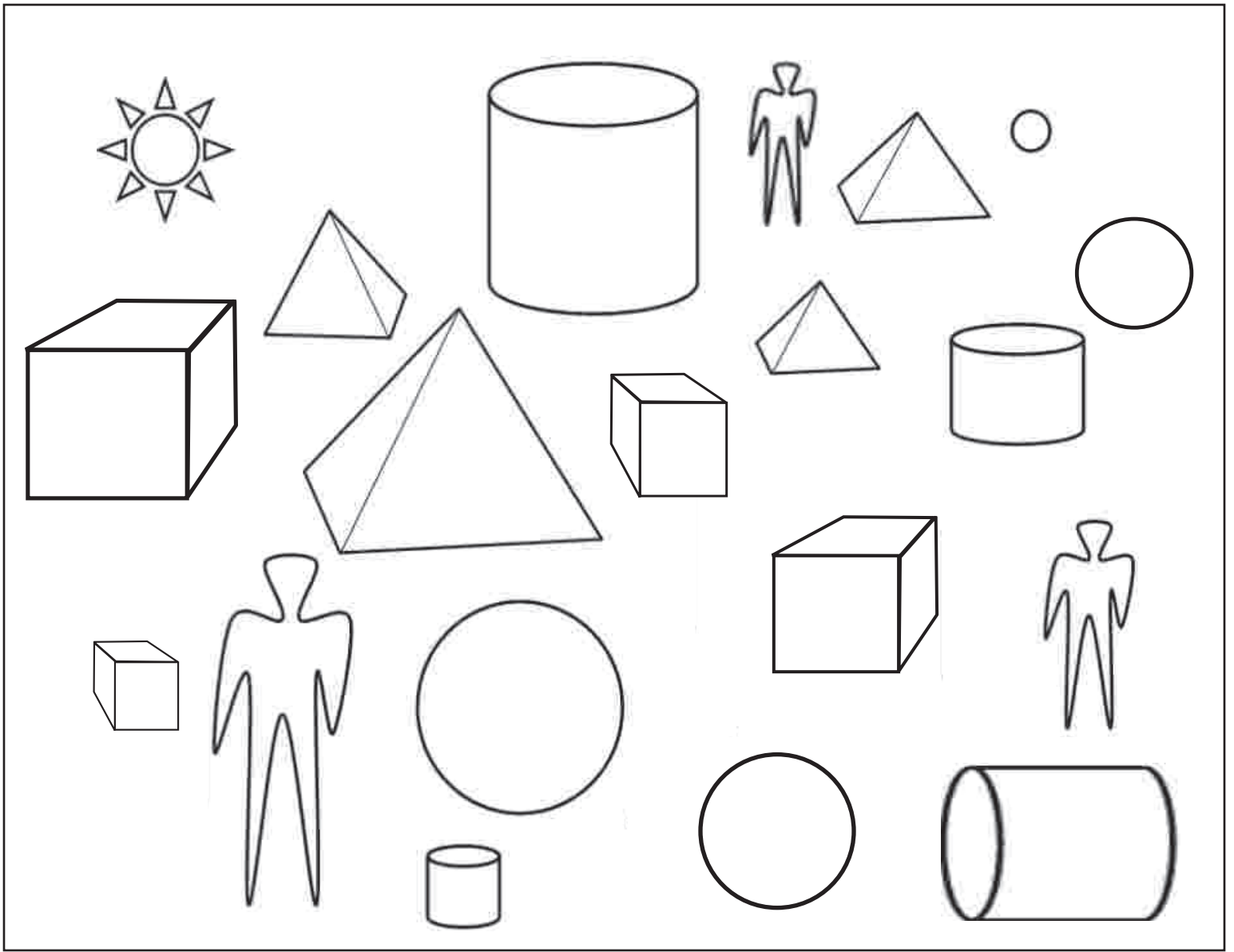
black

white



Changing shapes into forms using the technique of chiaroscuro





Remove this sheet from the back of the packet. *Cut out 2 sets of objects from this sheet.* For example, 3 figures would be one set; three pyramids another. Glue the objects onto the **landscape** so that they create correct space. Add shadow to each object using the sun as your light source.



EXAMPLE

